



MAPLE

by Pinestone Builders



3-4 BED | 3.5 BATH | 2,224 SQ FT

PRIMARY ON MAIN | COVERED PORCH | OFFICE | OPT BONUS ROOM

Speak With Our Specialists:

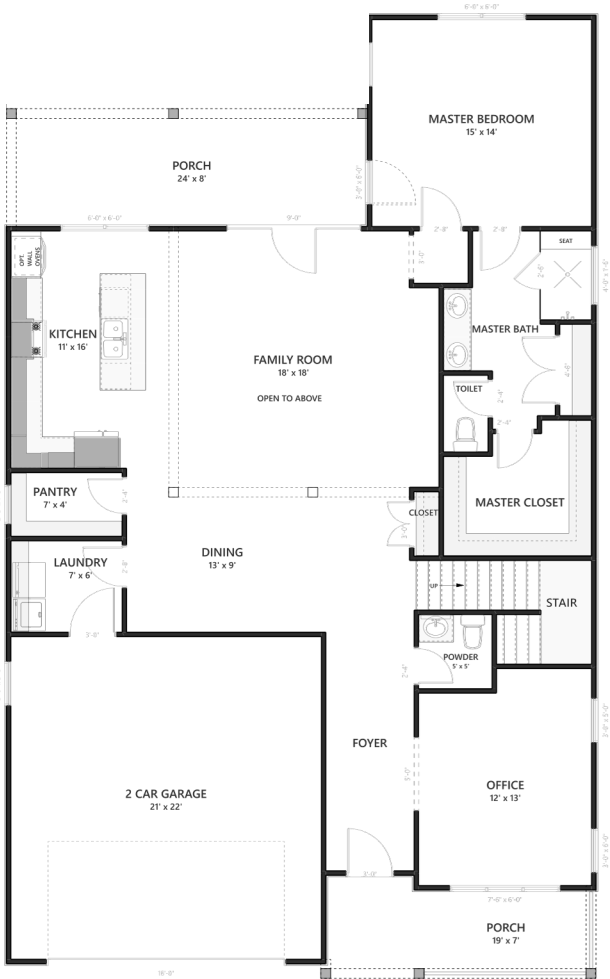
Hank Axson | Brittany Fry
homes@pinestonebuilders.com
864.477.2138

MAPLE

by Pinestone Builders

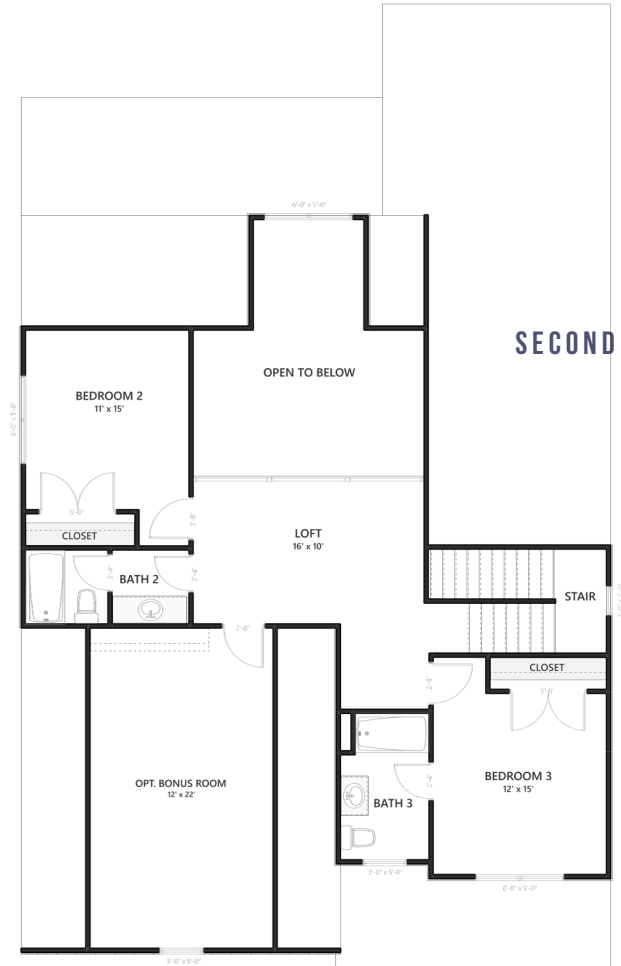
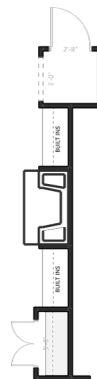


BERKSHIRE HATHAWAY
HOMESERVICES
C. DAN JOYNER,
REALTORS®



MAIN LEVEL

FIREPLACE OPTION



SECOND LEVEL

PRIMARY BATHROOM OPTION



WWW.PINESTONEBUILDERS.COM

*Pinestone Builders reserves the right to alter designs, features, and prices at any time without notice. Square footage and dimensions are approximate and subject to change. Renderings and floor plans are for illustrative purposes only. Certain exterior and interior features on renderings and floor plans may not be standard. See your community standard features sheet for community standards. While we aim to provide accurate information, we do not warrant its correctness or completeness. Consult our sales representative for the latest updates.

