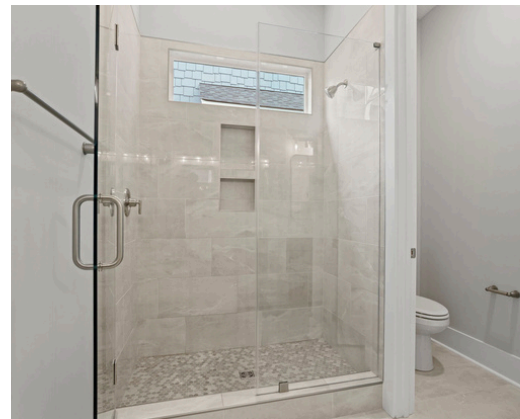
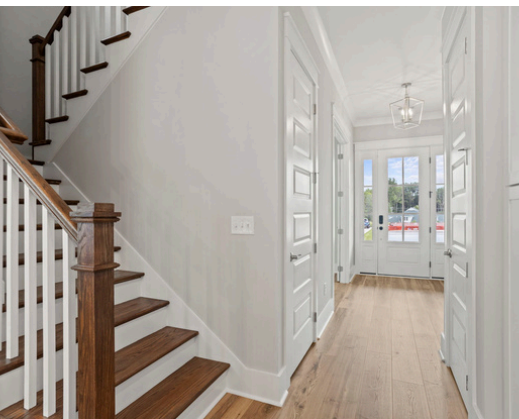




HEMLOCK

by Pinestone Builders



3 BED | 2.5 BATH | 2,200 SQ FT

PRIMARY ON MAIN | OFFICE | 2-CAR DETACHED GARAGE

Speak With Our Specialists:

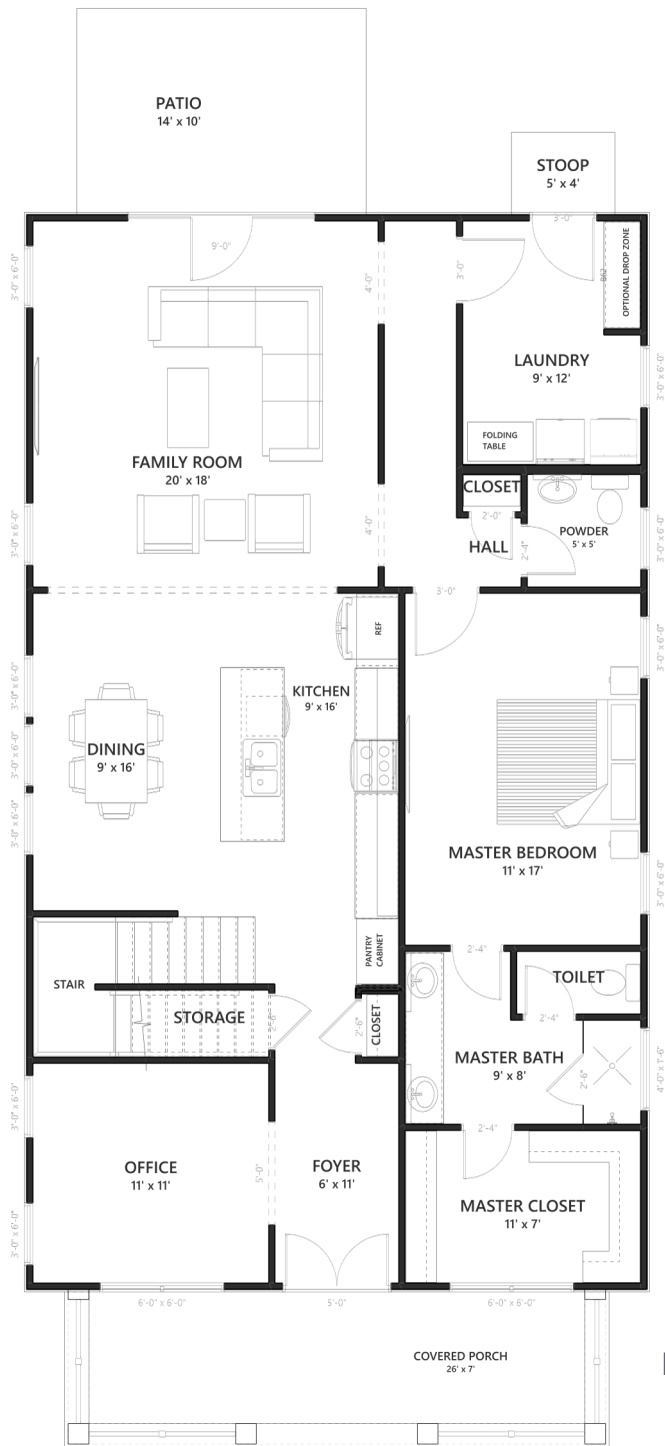
Hank Axson | Brittany Fry
homes@pinestonebuilders.com
(864) 867-1389

HEMLOCK

by Pinestone Builders



**BERKSHIRE
HATHAWAY**
HOMESERVICES
C. DAN JOYNER,
REALTORS®



MAIN LEVEL



UPPER LEVEL



FIREPLACE OPTION

*DIMENSIONS ARE APPROXIMATE



WWW.PINESTONEBUILDERS.COM

*Pinestone Builders reserves the right to alter designs, features, and prices at any time without notice. Square footage and dimensions are approximate and subject to change. Renderings and floor plans are for illustrative purposes only. Certain exterior and interior features on renderings and floor plans may not be standard. See your community standard features sheet for community standards. While we aim to provide accurate information, we do not warrant its correctness or completeness. Consult our sales representative for the latest updates.

